

MATERIAL SPECIFICATIONS

WORKTOPS: 1.2mm 304 GRADE ST.STL.

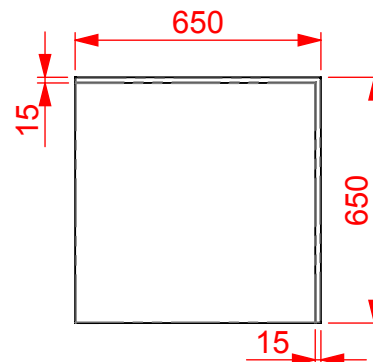
FRAMEWORK: 30 x 30 430 GRADE

ST. STL. BOX SECTION

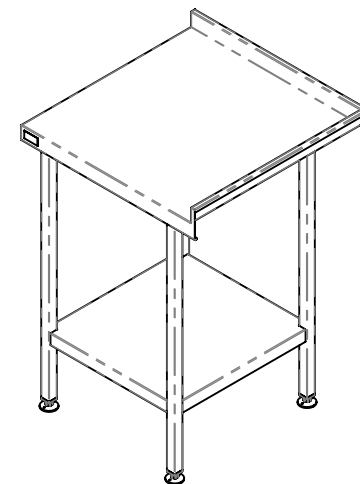
UNDERSHELVES: 1.2mm 430 GRADE ST. STL.

FEET: ADJUSTABLE FLANGED

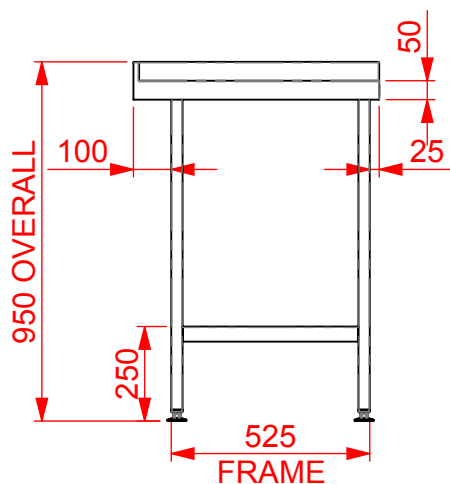
(CAST ALUMINIUM)



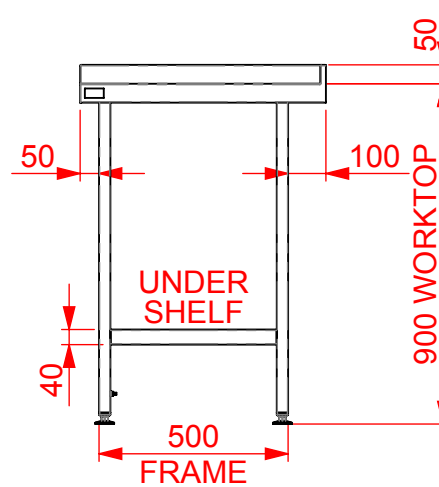
PLAN VIEW



ISOMETRIC VIEW



SIDE VIEW



FRONT VIEW

APPROVAL FOR
MANUFACTURE

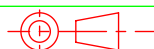
Signature..... Print.....



CED FABRICATIONS LTD
CLAYTON HOUSE
CLAYTON BUSINESS PARK
CLAYTON-LE-MOORS
HYNDBURN
LANCASHIRE BB5 5JD

This drawing and information herein is confidential to CED Fabrications Ltd.
It is issued in confidence that it will not be disclosed to any third
party in part or in whole without permission from CED FABRICATIONS Ltd.

© 2005 CED FABRICATIONS LTD



DO NOT SCALE

A

NEW DESIGN

28/01/2019

CUSTOMER Ref:

REV.

REVISION

DATE

TITLE: CORNER W.BENCH 900(H)x650(L)x650(D) RH

REV No: A

DRAWN BY: AHR

CUSTOMER O/No:

DRG No: QCWB6565RH

DATE: 28/01/2019

SCALE: 1:20